



***GLOBALTE-CH.,Ltd***

and Hana Hydraulic | Seoul, South Korea

# Agenda

1. Greetings, Management Philosophy
2. Company History
3. Company Structure
4. Main Products
5. Current Main Customers
6. Product Application
7. Competitiveness, Certification Status




# 1. Greetings, Management Philosophy

## Greetings

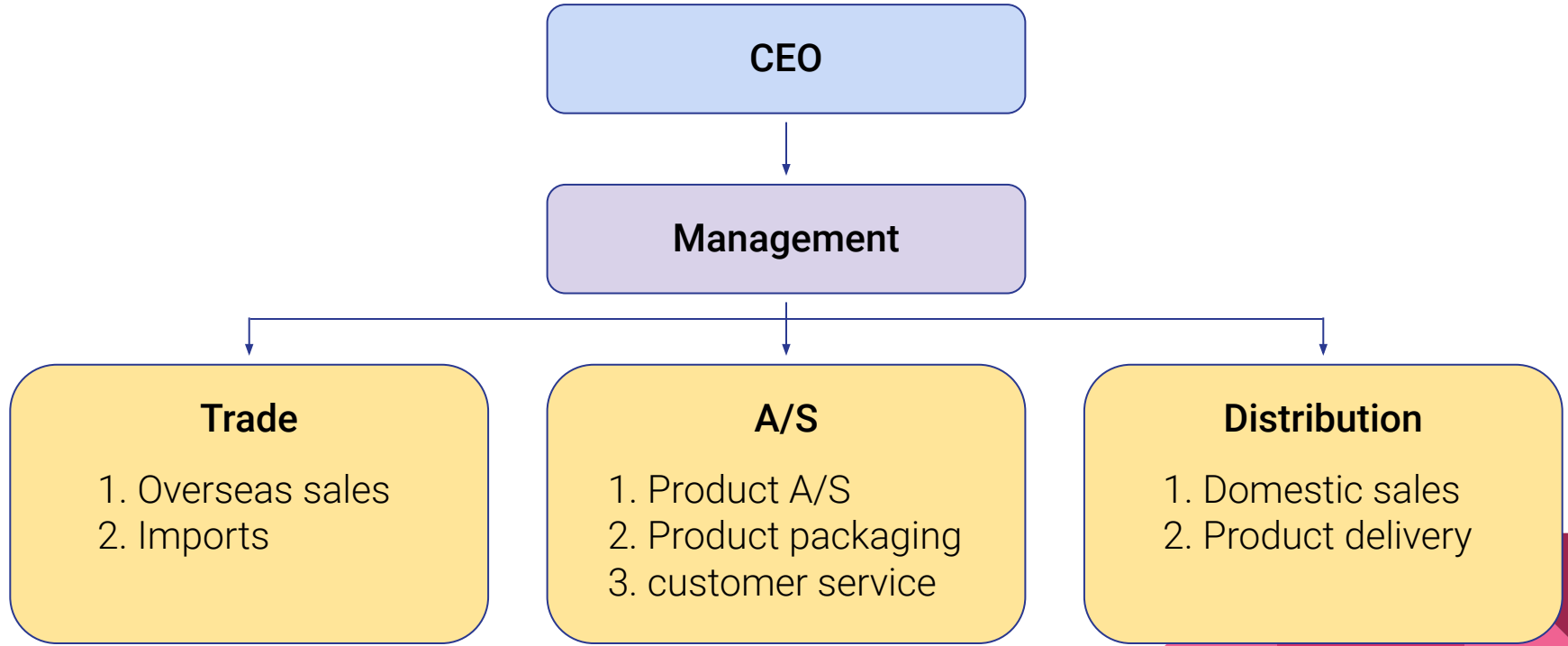
Based on our 25 years of experience and skills in the hydraulic market, we have grown as a professional distributor of hydraulic parts for valves, motors, pumps, and major accessories in domestic and overseas industrial systems. We will continue to strive to become a company that puts the highest priority on customer satisfaction and puts best efforts for good quality. We ask for your continued interest and support in the future.

## Management Philosophy

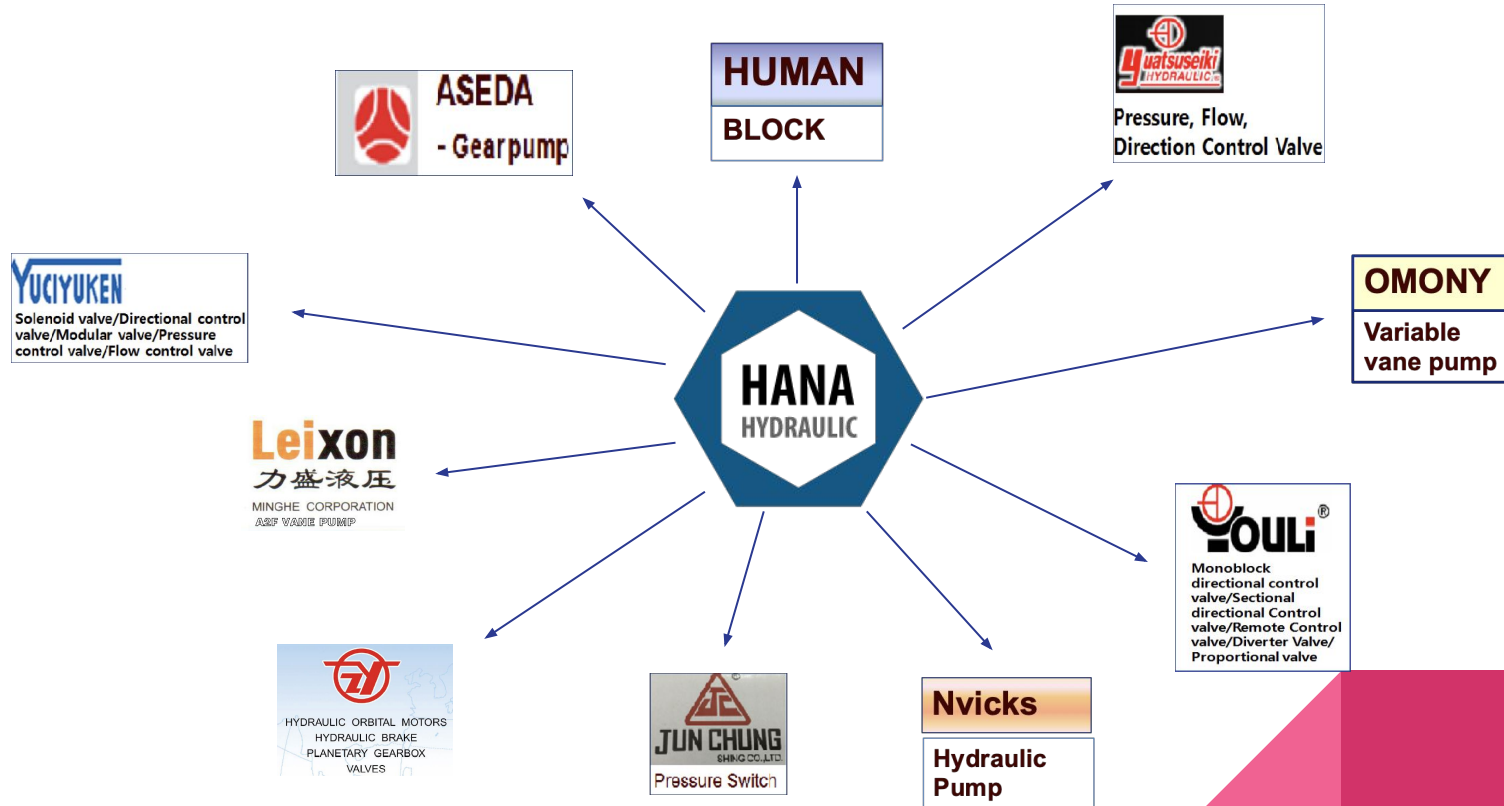
Contribute to human society by creating customer satisfaction and service based on human resources and efficient distribution.







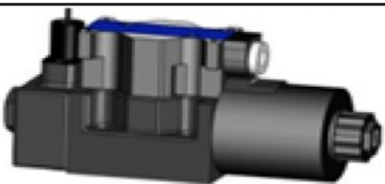



### 3. Company Structure



# 4-1. Our Partners



## 4-2. Main Products

|                 |  |             |  |
|-----------------|--|-------------|--|
| GLOBAL-<br>TECH |   | OMONY       |   |
| YOU LI          |   | YUATSUSEIKI |   |
| YUCIYUKEN       |   | HUMAN       |   |
| NVICKS          |  | JUNCHUNG    |  |

## 5. Current Main Customers

- **Sales in domestic hydraulic and pneumatic distribution centers** - Yeongdeungpo Tool Shopping District, Guro Tool Shopping District, Siheung Distribution Shopping District, Anyang International Distribution Mall, Sihwa Distribution Tool Mall, Incheon Industrial Product Center, Namdong Industrial Complex, Daejeon, Cheongju, Daegu and other major hydraulic and pneumatic companies nationwide.
- **Exporting to Vietnam, Japan and Cambodia under the name of ASEDA Hydraulic**
- **Sales in domestic and foreign hydraulic companies**



## 6. Product Applications

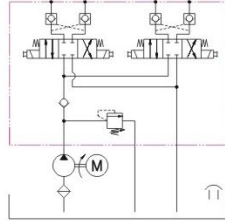




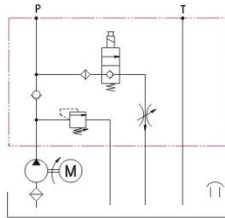
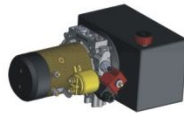
# 6-1. Product Applications

## TYPICAL APPLICATION-DC

### WING BODY

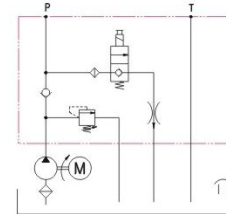


### TIPPER

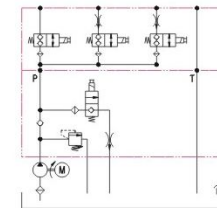


## TYPICAL APPLICATION-AC

### SCISSOR LIFT

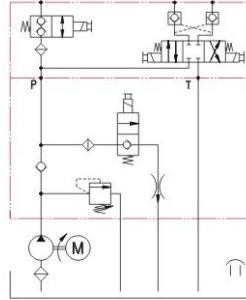


### 4 POST CAR LIFT

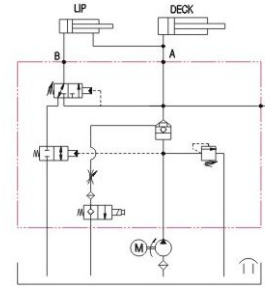


## 6-2. Product Applications

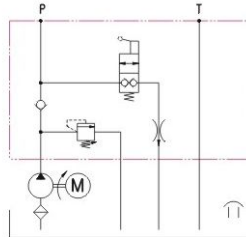
*TAIL LIFT*



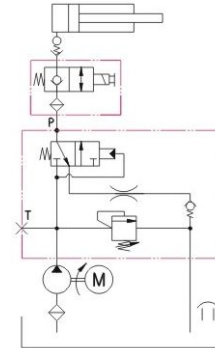
*DOCK LEVELER*



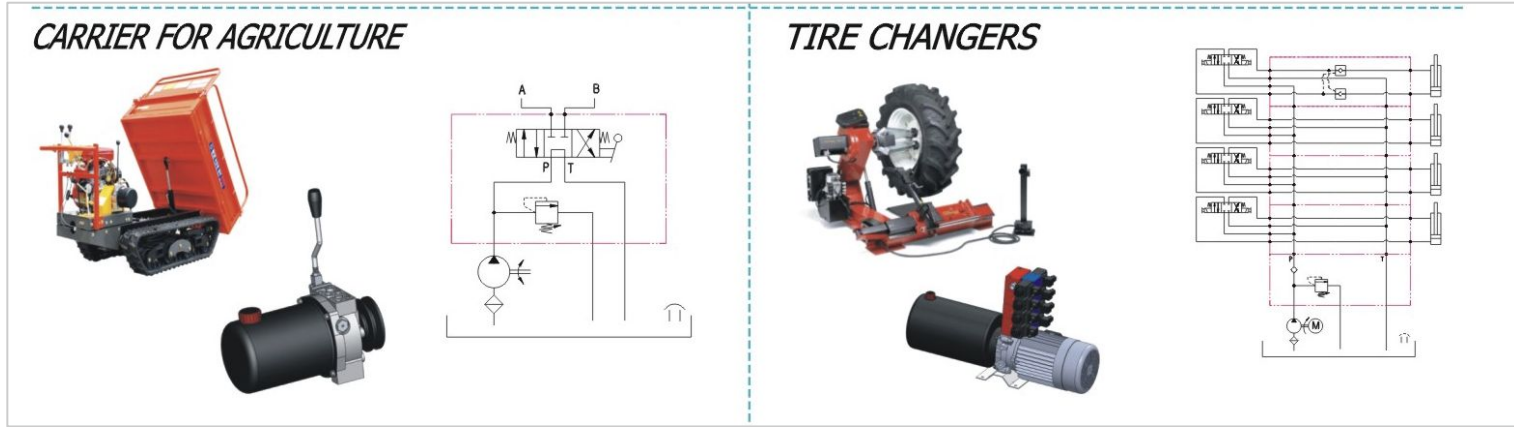
*STACKER*



*PLATFORM MAN LIFT*



## 6-3. Product Applications



- 1. SAP 10 OR 20 GEAR PUMP SERIES** - Garbage trucks, presses, cutters, special equipment vehicles, and general industrial machines.
- 2. SAP 30 OR 50 GEAR PUMP SERIES** - Special equipment vehicles, ladder trucks, garbage trucks, presses, cutters, general industrial machines.
- 3. DSAP 10 OR 20 OR 50 FLOW DIVIDERS SERIES** - Special equipment vehicles, forklifts, and general industrial machines.

## 7. Competitiveness, Certification Status

- Leading the domestic hydraulic parts market by importing from Taiwan and China.
- Efforts to become a global and social enterprise through pump manufacturing and technology development.
- Aiming to be a company that always thinks about customer satisfaction and quality of the product
- Acquired International Quality Certificate





***Thank you***

Hana Hydraulic & Globalte-ch | Seoul, South Korea