

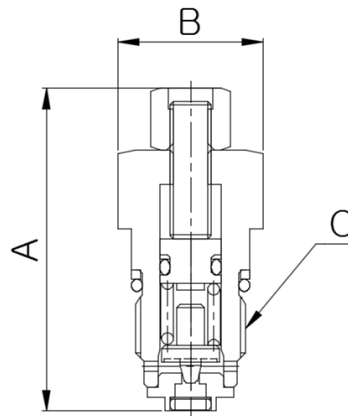
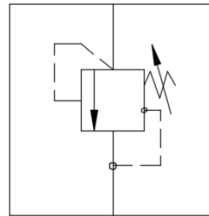


PRODUCTS LIST

■ RELIEF VALVE	-----2
■ CHECK VALVE CARTRIDGE	-----3~4
■ SOLENOID VALVE CARTRIDGE	-----5
■ BALL SHUTTLE	-----6
■ GREASE VALE	-----7
■ COUNTER BALANCE VALVE	-----8
■ SAFETY LOCK VALVE	-----9~12
■ DOUBLE PILOT CHECK VALVE	-----13~14
■ LOCKING VALVE	-----15
■ SOLENOID VALVE ASSEMBLY	-----16~19
■ EPPR VALVE	-----20
■ 2WAY SHUTTLE VALVE	-----21
■ ACCUMULATOR	-----22
■ MANIFLOD BLOCK	-----23
■ BLOCK TERMINAL	-----24
■ DIVERTER VALVE	-----25
■ 3WAY VALVE	-----26
■ VARIABLE DISC	-----27
■ GAS TENSION CYLINDER	-----28

RELIEF VALVE

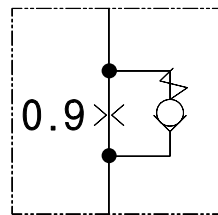
As a small-size Relief Valve for a high pressure, it fits a limited space and utilizes its outputted pressure as an emergency control pilot pressure.



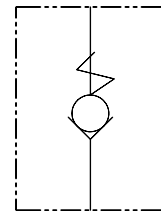
MODEL/Type	ADJ, PRESS (kgf/cm ²)	PRESS. INCREASE (kgf/cm ²)	A	B	C
DRVA-370/390A	200-600	336	47	102	M16x1.5P

CHECK VALVE CARTRIDGE

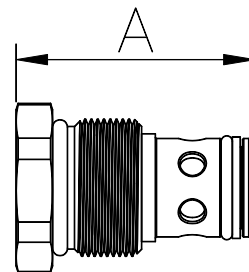
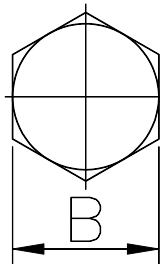
Used in part of Solenoid Valve, it is a poppet-Type Check Valve which includes check type and orifice type.



ORIFICE TYPE



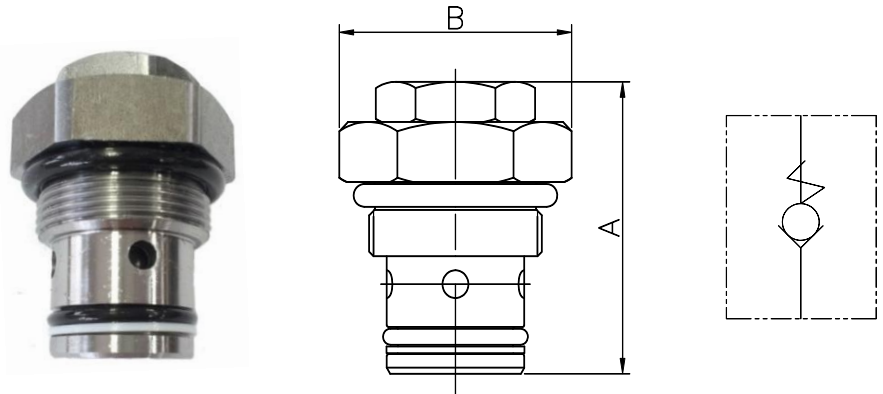
NORMAL TYPE



MODEL	TYPE	SPEC.	Size	A(max)	B
DJ-SCV-100A	A	MAX PRESSURE 210kgf/cm ² MAX FLOW 64L/MIN	UNF7/8-14	37.3	HEX25
DJ-SCV-200A	B				
DJ-SCV-300A	ORIFICE				

CHECK VALVE CARTRIDGE N6 TYPE

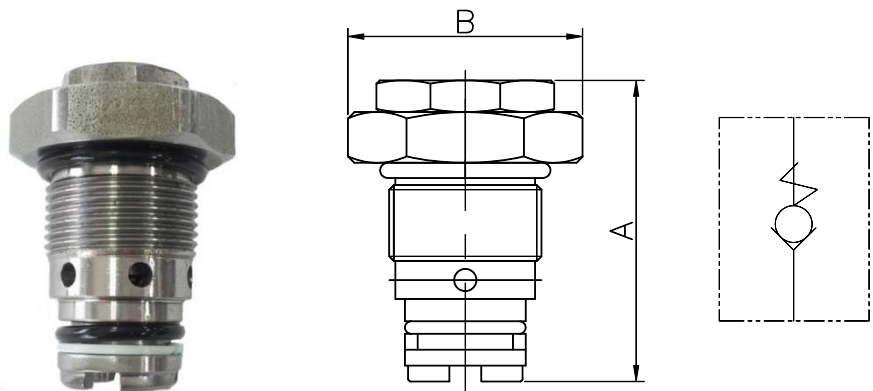
Used in Double Pilot Check Valve, it is a Poppet Type.



MODEL	SPEC.	Size	A(max)	B
DPC-NVB-001A ~ 004A	MAX PRESSURE 380kgf/cm ² MAX FLOW 110L/MIN	M30*1.5P	48	HEX35

CHECK VALVE CARTRIDGE N4 TYPE

Used in Double Pilot Check Valve, it is a Poppet Type and consists plus-shape slot at front side.



MODEL	SPEC.	Size	A(max)	B
DVD-800A	MAX PRESSURE 380kgf/cm ² MAX FLOW 110L/MIN	M24*1.5P	48	HEX32

SOLENOID VALVE CARTRIDGE

Switching on/off with the electric signal, Solenoid Valve Cartridge can control the hydraulic flow. This valve includes a Manual Override Sol and Sol Valve, and 12V to 24V can be applied to it.



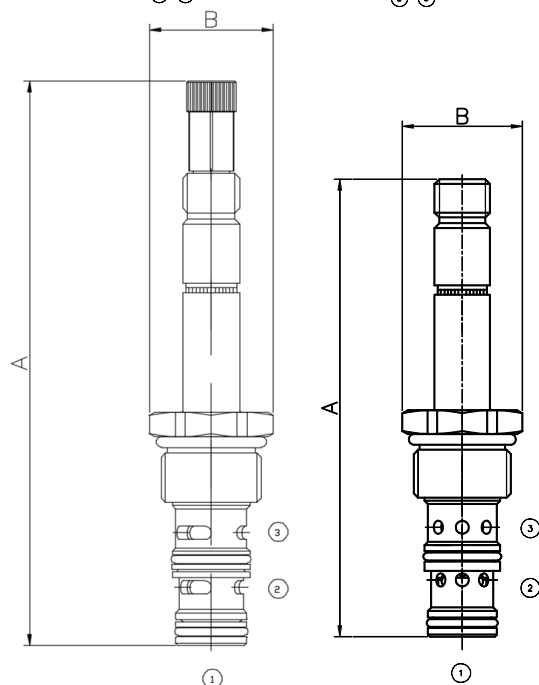
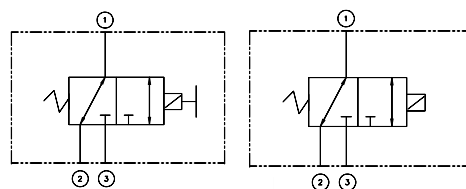
M.O SOL



SOL



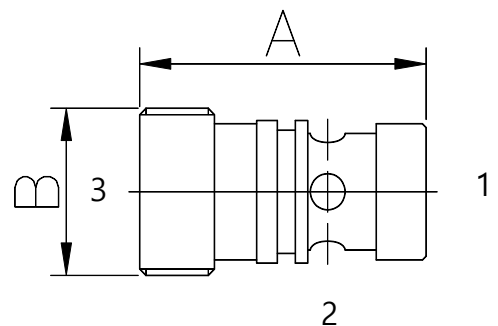
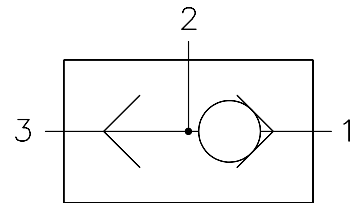
COIL



MODEL	TYPE	SPEC.	Size	A(max)	B
DJ-MOSV-00C	M.O SOL	OPERATING PRESSURE 50kgf/cm ² MAX OPERATING PRESSURE 70kgf/cm ² NOMINAL FLOW 23L/min	UNF7/8-14	125.6	HEX25
DJ-SV-00	SOL			105	

BALL SHUTTLE VALVE

BALL SHUTTLE VALVE is an embedded valve which runs inside of other products.

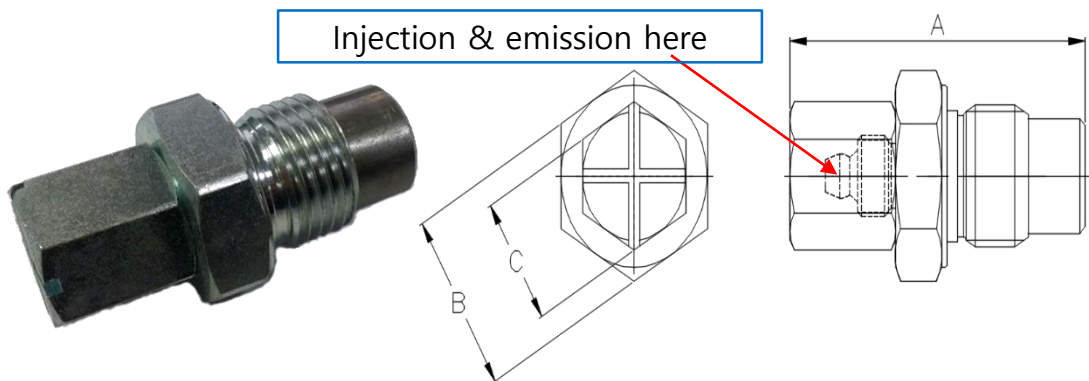


MODEL	Pressure(kgf/cm ²)	Oil Amount(LPM)	A	B
DSH-001A	MAX350	MAX15	23	PF 1/4

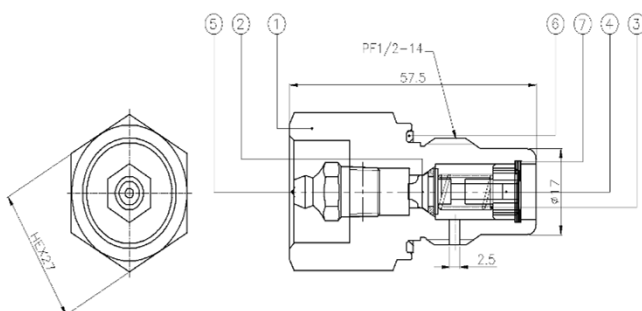
GREASE VALVE

Grease Valve is an injected Valve which is used in any products such as excavators' Crawler types to make them operate properly.

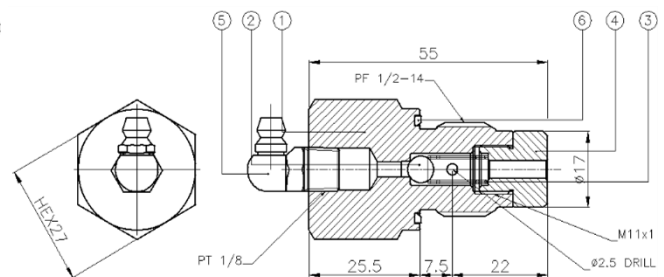
Our patent has the function that, when the Tension Cylinder's pressure finishes, it trades the pressure off, keeping the connection and pressing the pin at front side.



취부Size	A(max)	B	C	B Torque	C Torque
PF 1/2 - 14	54.5	HEX27	HEX19	13kgf.m	3kgf.m
M16x1.5	54.5	HEX27	HEX19	8kgf.m	3kgf.m



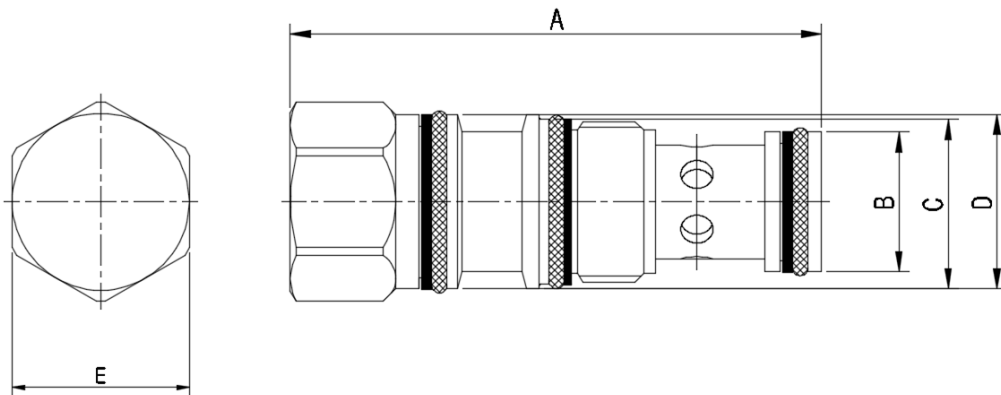
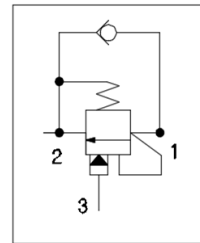
Poppet Type(extra order needed)



Ball Type(extra order needed)

COUNTER BALANCE VALVE

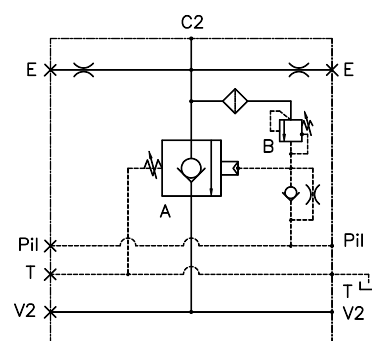
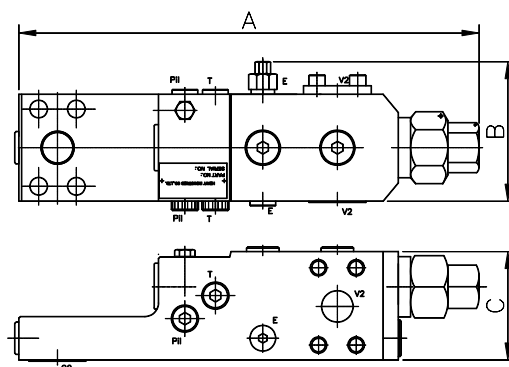
The Counter Balance Valve is used as a valve for controlling hydraulic devices and is widely used in industries or facilities that are hydraulically controlled, such as height work vehicles and excavators



취부Size	A	B	C	D	E	체결토크	SPEC.
M20x1.5P	66.1	Ø17.4	Ø21.1	Ø21.7	HEX22	4.5kgf.m	SETTING PRESSUE 200~245kgf/cm ² FLOW 60L/min PILOT RATIO 3:1

SAFETY LOCK VALVE (Medium)

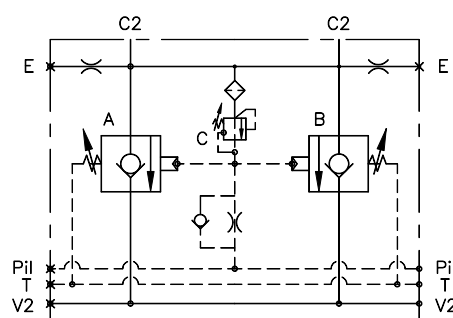
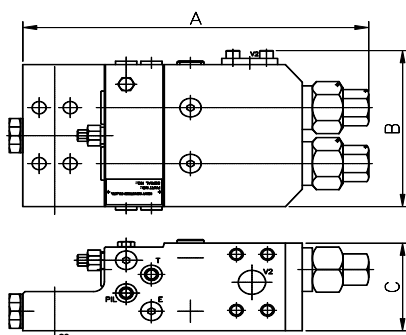
Located in a boom and Arm Cylinder of excavators, Safety Lock Valve stops their basket's rapid falling down due to any reason, preserving critical accidents. This valve is used normally for the safety of both workers and excavators.



MODEL/Type	Max Working Pressure(kgf/cm ²)	Oil Amount (Lpm)	A(max)	B(max)	C
SLA4-000A	600	150	244	102	71
SLA6-000A	600	250	255	112	81
SLA8-000A	600	400	344	112	82
SLAA-000A	600	400	314	122	91
SLA5-000A	400	350	314	119	91
SLB6-000A	600	400	314	119	91

SAFETY LOCK VALVE (Large)

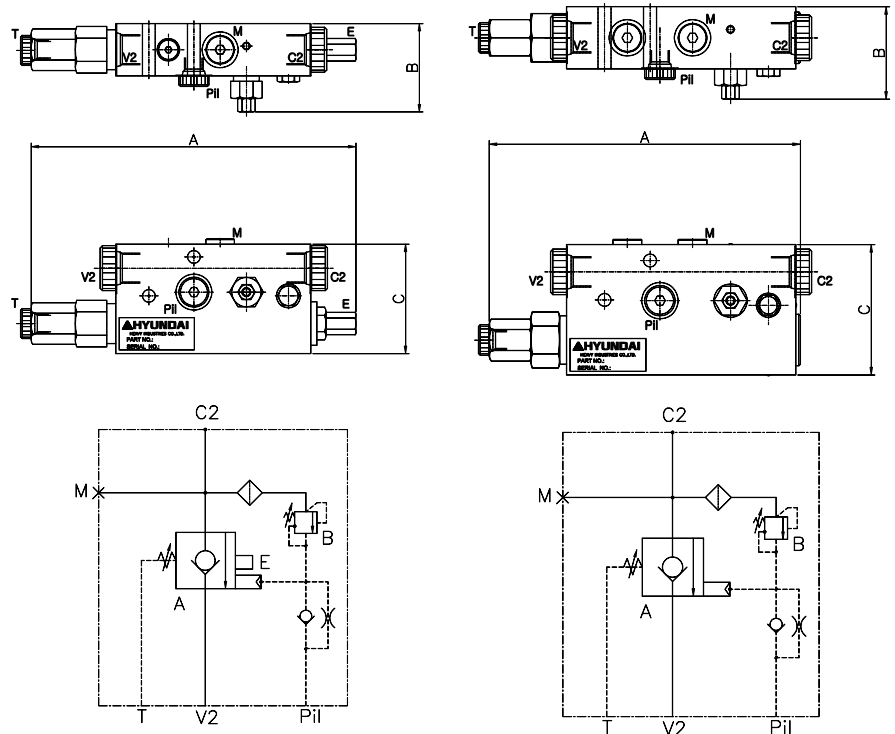
Located in a boom and Arm Cylinder of excavators, Safety Lock Valve stops their basket's rapid falling down due to any reason, preserving critical accidents. This valve is used normally for the safety of both workers and excavators.



MODEL/Type	Max Working Pressure(kgf/cm ²)	Oil Amount (Lpm)	A	B(max)	C(max)
SC9-QBAH-30000	420	500	310	153	96
CSC7-QBH-100A	600	600	340	160	110
CSV7-QAH-200A	600	600	340	160	112
CSVSB-QAH-300A	500	600	340	160	112
SV9-QBRH-20000	420	500	310	160	112
SV9-QBLH-10000	500	600	340	160	125

SAFETY LOCK VALVE (Small)

Located in a boom and Arm Cylinder of excavators, Safety Lock Valve stops their basket's rapid falling down due to any reason, preserving critical accidents. This valve is used normally for the safety of both workers and excavators.



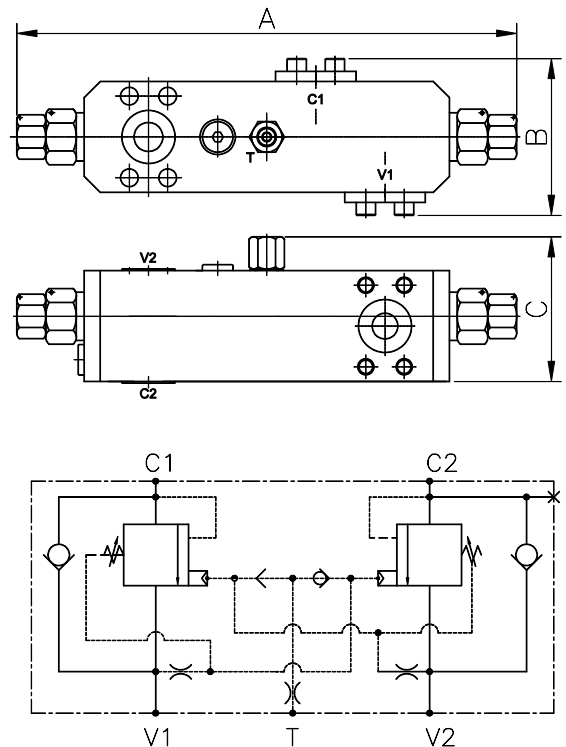
1

2

	MODEL/Type	Max Working Pressure (kgf/cm ²)	Oil Amount (Lpm)	A(max)	B(max)	C
1	DJ-SLV030A-1 DJ-SLV030A-2	600	150	216.5	59	73
2	DJ-SLV050B-1 DJ-SLV050B-2	600	250	205	60	86

**DOUBLE
PILOT
CHECK
VALVE
2PCS**

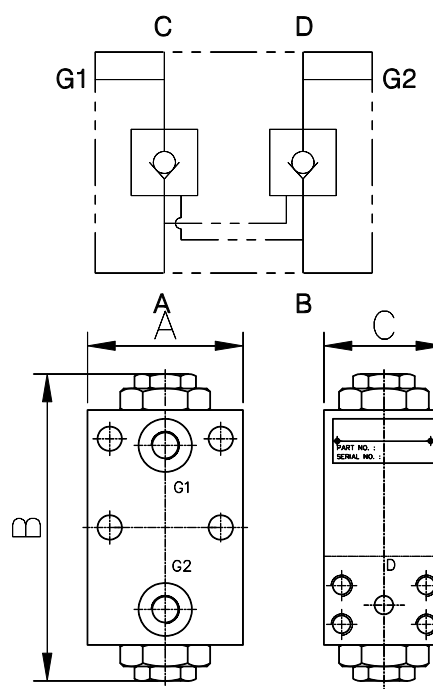
2PCS has a similar function as Double Pilot Check Valve. Its pilot area ratio is 8 to 1 and can change the ration easily for any purpose.



MODEL/Type	Max Working Pressure(kgf/cm ²)	Oil Amount (Lpm)	A(max)	B(max)	C
SLE4-000A	360	150	323	100	90

DOUBLE PILOT CHECK VALVE

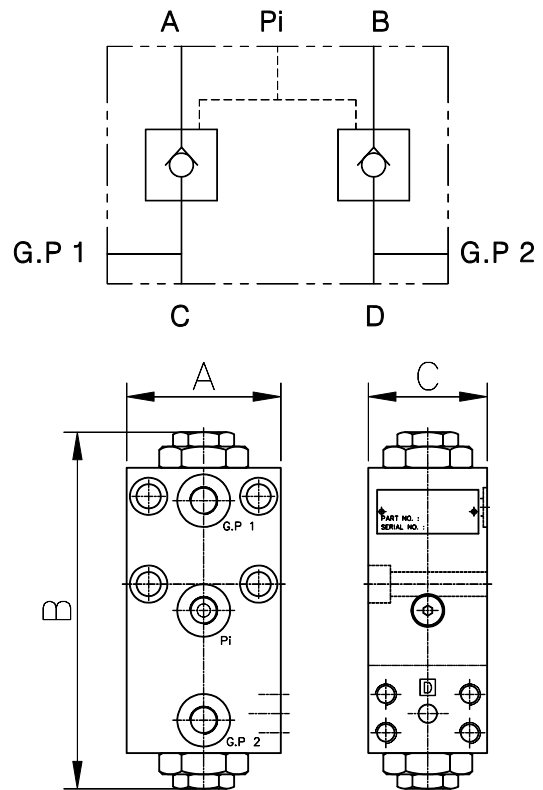
Located in Dozer's and Outrigger's Cylinder for the safety, Double Pilot Check becomes optimized to any operating conditions to keep the Cylinder's balance.



MODEL /NO.	Operation Pressure (kgf/cm ²)	Max Oil Amount (L/min)	A	B (max)	C
PCVC-000A PCVC-001A	380	110	70	131	54
DPC-NR-110-200W DPC-NL-100-200W	380	110	70	139	54
DPC-NR-110 DPC-NL-100	380	110	70	139	54
DPC-NR-210 DPC-NL-200	380	110	70	139	54

PILOT CHECK VALVE

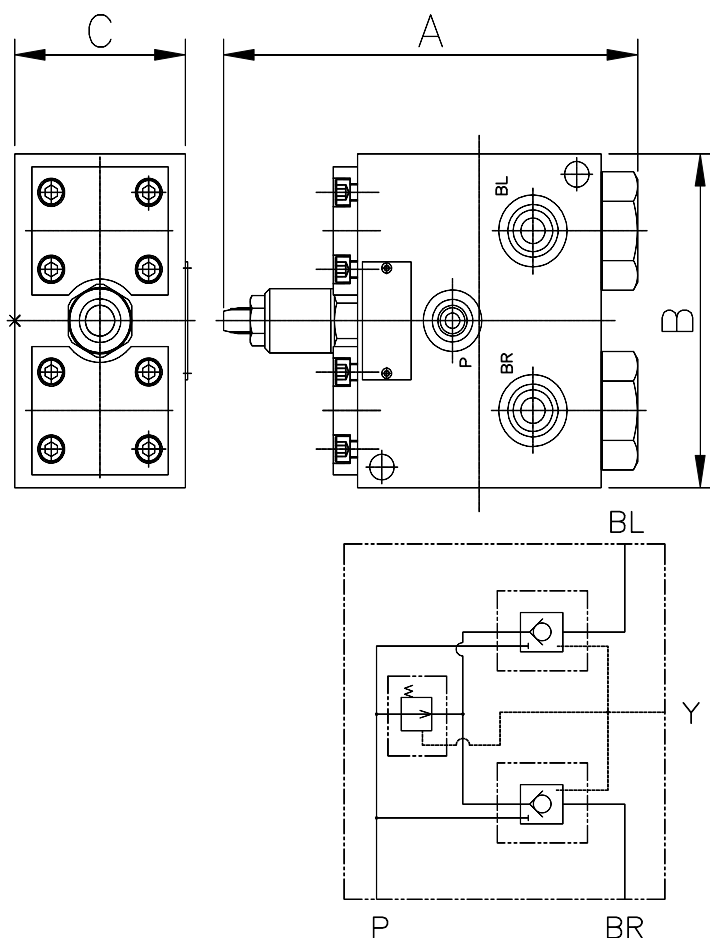
Located in Dozer's and Outrigger's Cylinder for the safety, Pilot Check Valve becomes optimized to any operating conditions to keep the Cylinder's balance. However, unlike Double Pilot Check Valve, Pilot Check Valve is the single Pilot Line offer type.



MODEL /NO.	Operation Pressure (kgf/cm ²)	Max Oil Amount (L/min)	A	B (max)	C
DPC-31Q6R-660 DPC-31Q6L-600	350	230	70	163	54
DPC-31Q6R-670 DPC-31Q6L-610	350	230	70	163	54

LOCKING VALVE

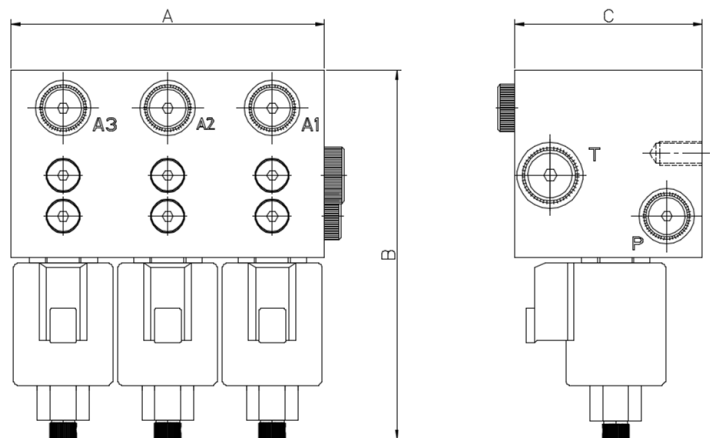
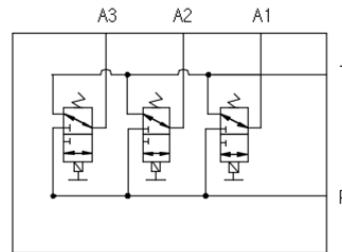
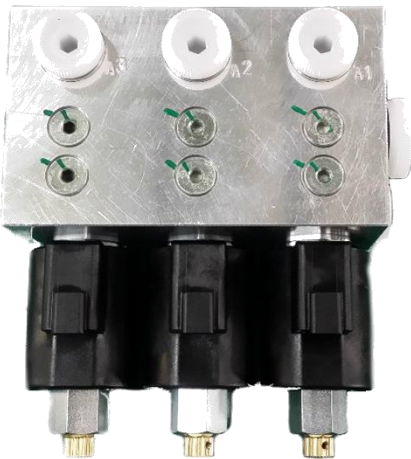
With Reducing Valve included, Locking Valve controls an oscillating cylinder in wheel-type excavators, enabling them to keep the whole well balanced.



MODEL /NO.	Permitted Pressure (kgf/cm ²)	Cranking Pressure (kgf/cm ²)	A (max)	B	C
LV3-100	350	2	173	130	70
	350	3	173	130	70

SOLENOID VALVE OUTRIGGER

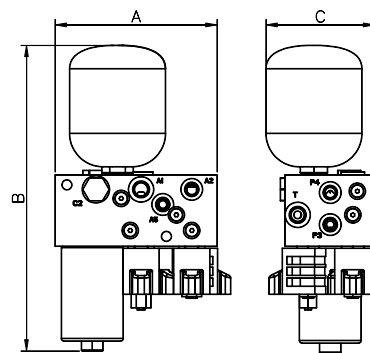
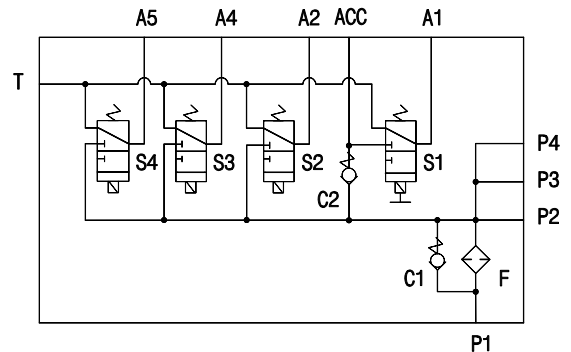
As a valve using an electric direction switch function, Solenoid Valve Outrigger changes on/off switch with the electric signal. Furthermore, this valve consists of the manual override function which relays oil in each line to operate and controls the excavators' outrigger function.



MODEL/Type.	working Pressure (kgf/cm ²)	Oil Amount (Lpm)	A	B(max)	C
DJ-SNV037A	150	20	132	156	79

SOLENOID VALVE 4CARTRIDGE ASSEMBLY

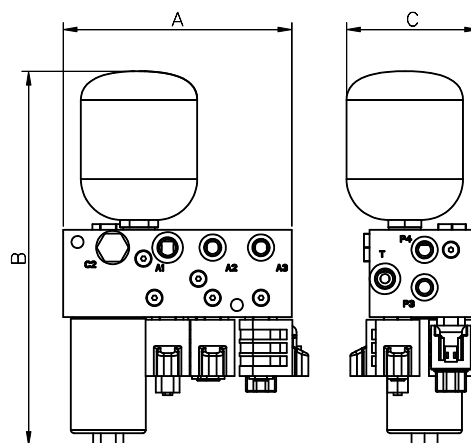
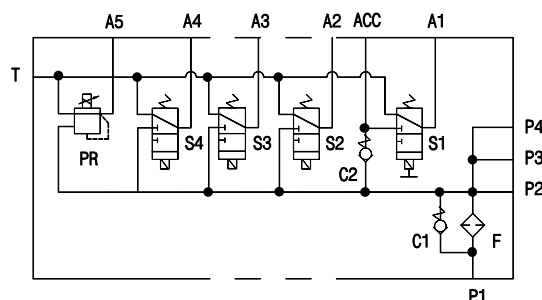
As a valve using an electric direction switch function, Solenoid Valve 4 Cartridge Assembly changes on/off switch with the electric signal. Furthermore, this valve consists of the accumulator function which relays oil in each line to operate and controls the excavators' major function.



MODEL/Type.	working Pressure (kgf/cm ²)	Oil Amount (Lpm)	A	B(max)	C(max)
DJ-SNV001A	50	30	179	340	122

SOLENOID VALVE 5CARTRIDGE ASSEMBLY

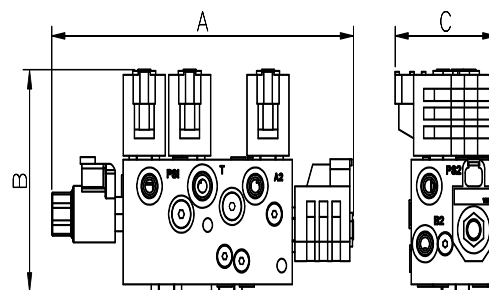
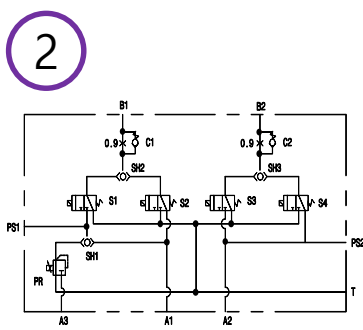
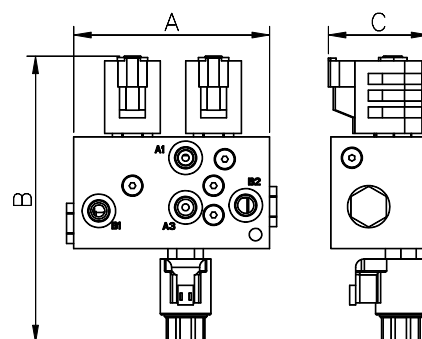
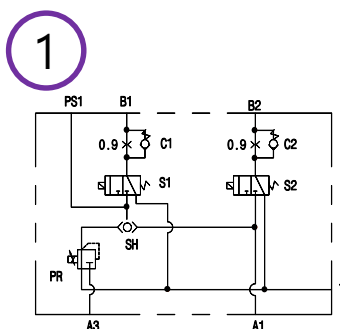
As a valve using an electric direction switch function, Solenoid Valve 5 Cartridge Assembly changes on/off switch with the electric signal. Furthermore, this valve consists of the accumulator function which relays oil in each line to operate and E.P.P.R valve and controls the hydraulic flow.



MODEL/Type.	working Pressure (kgf/cm ²)	Oil Amount (Lpm)	A	B(max)	C(max)
DJ-SNV006A	50	30	208	340	122

SOLENOID VALVE ASSEMBLY

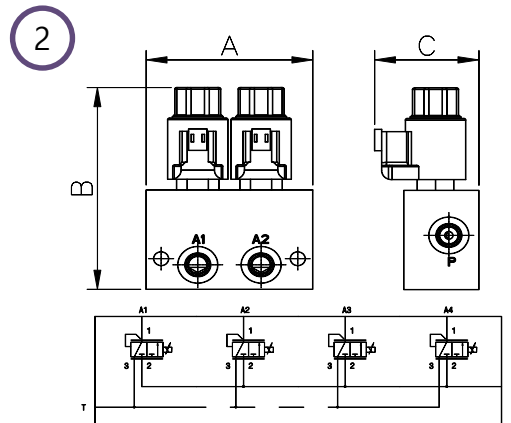
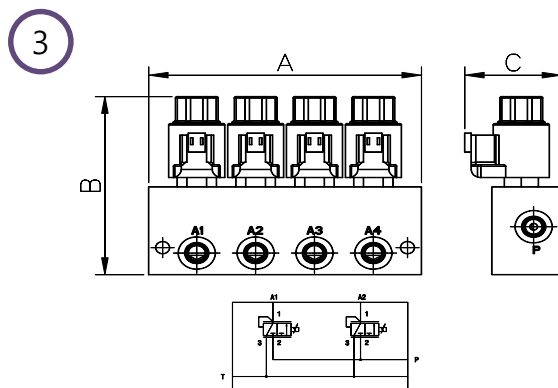
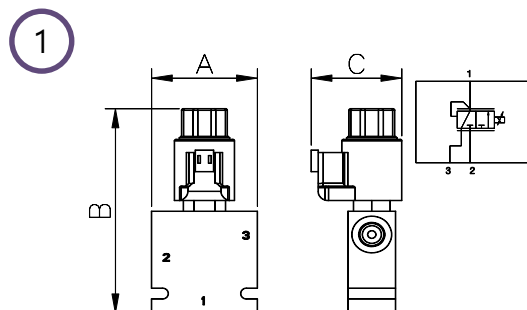
As a valve using an electric direction switch function and relaying oil in each line to operate, Solenoid Valve Assembly changes on/off switch with the electric signal. In addition, this valve is an embedded type into Shuttle Valve and controls the hydraulic flow.



	MODEL/Type	working Pressure (kgf/cm ²)	Oil Amount (Lpm)	A	B(max)	C(max)
1	DJ-SNV009A	50	20	140	206	72
2	DJ-SNV011A	50	20	286	143	96

E.P.P.R VALVE

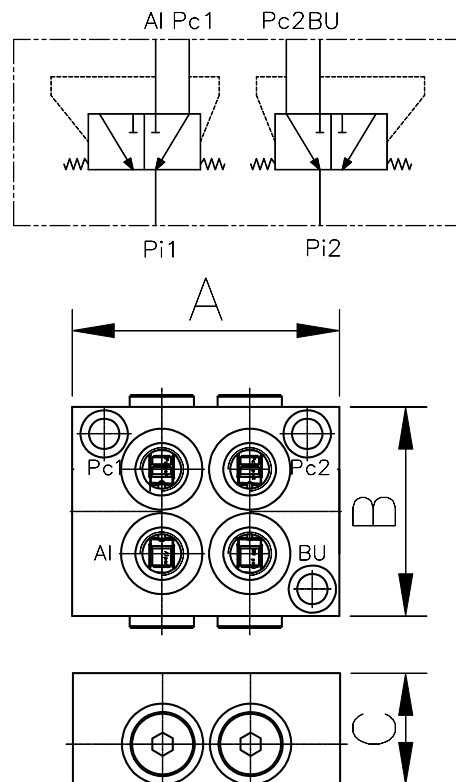
Controlled by electric current, E.P.P.R valve adapts 12V's or 24V's coils.



	MODEL/Type	working Pressure (kgf/cm ²)	Oil Amount (Lpm)	A	B(max)	C(max)
1	DJ-SNV010A	50	20	63.8	134	54.6
2	DJ-SNV012A	50	18	100	132	63
3	DJ-SNV013A	50	18	176	132	63

2WAY SHUTTLE VALVE

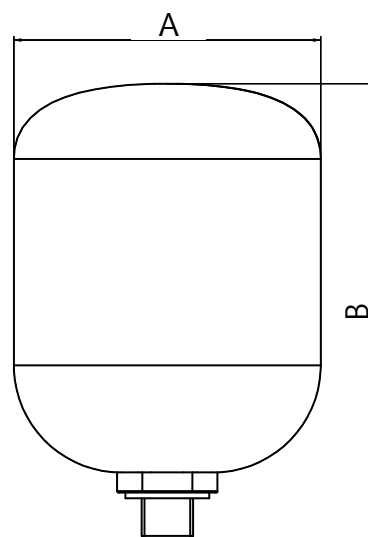
Shuttle Valve distributes the pressure coming from MCV or swash plate pumps, and relay the flow. Spool-type has been applied to this valve.



MODEL	Test Pressure (kgf/cm ²)	Oil Amount (LPM)	A(max)	B	C
DSTV-Q6-21190	50	1	79	62	33

ACCUMULATOR

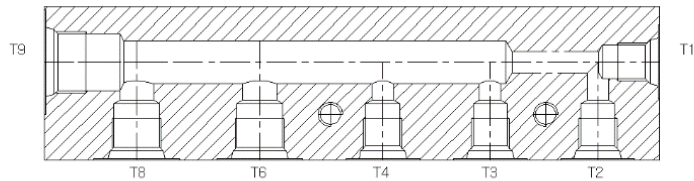
Accumulator literally accumulates the high-pressure oil into it for absorbing pressure, delivering oil and pressure; and buffering against urgent oil pressures, oil pulsation, damages in any situation.



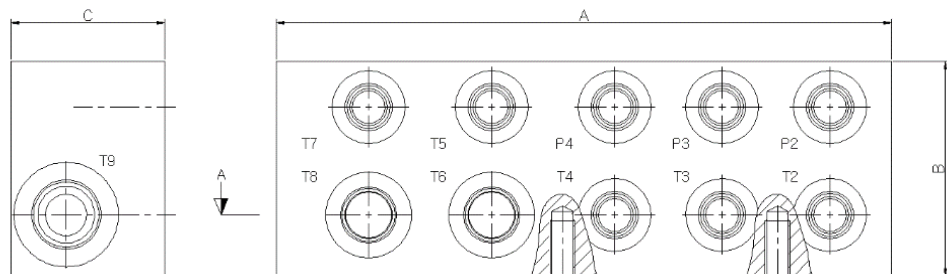
MODEL	Size	Size	A(max)	B(max)
DJ-HSB-070L	0.7L	M18*1.5P	106	162
DJ-HSB-075L	0.75L	M18*1.5P	120	162

MANIFOLD BLOCK

Manifold Block can be made with steel, aluminum, and so on to distributing or connecting pressure in the hydraulic system, joining various hoses.



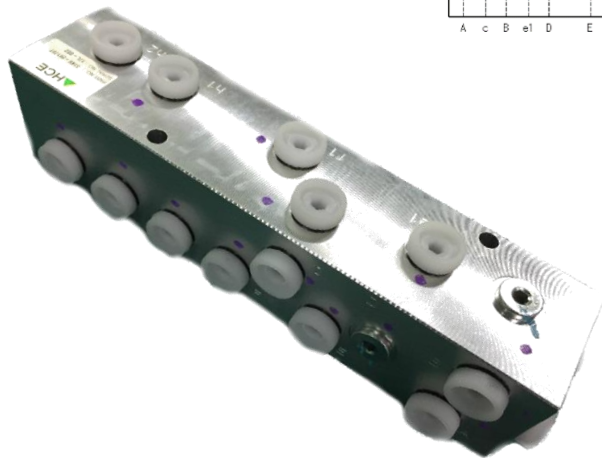
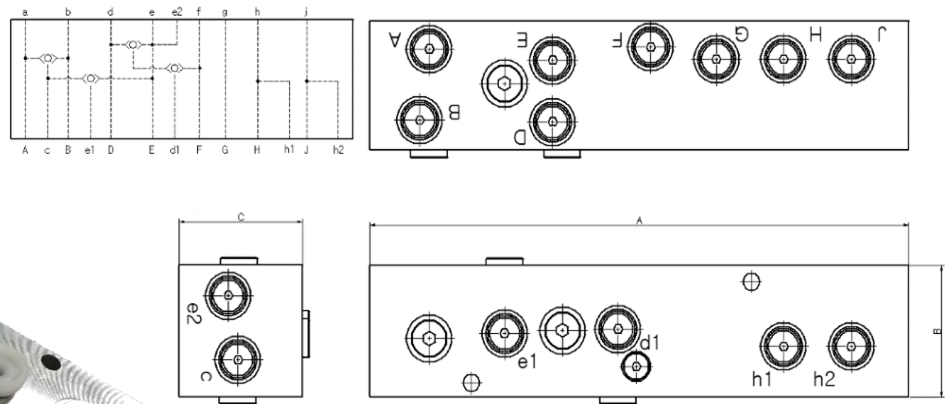
SECTION A - A



Composition Ports	Materials	A(max)	B(max)	C(max)
Extra order needed	Steel, Aluminum	Extra order needed	Extra order needed	Extra order needed

BLOCK TERMINAL

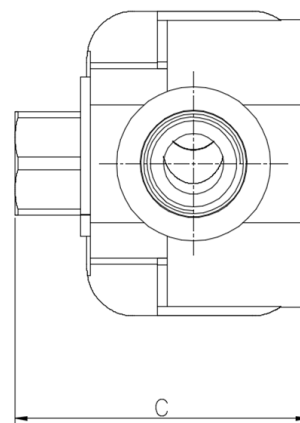
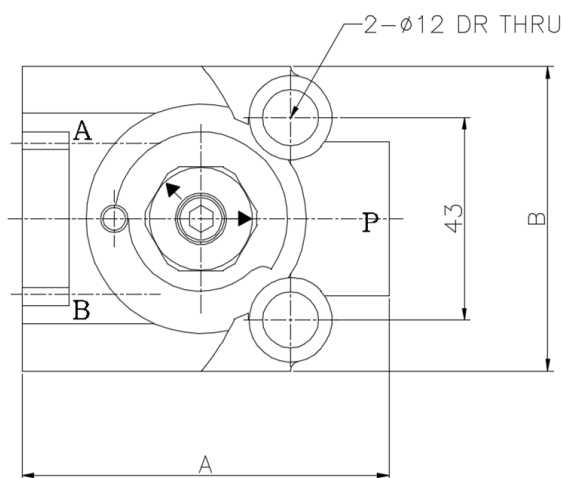
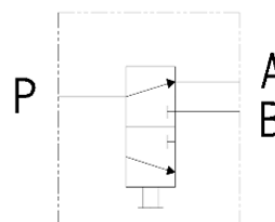
Block Terminal is a block which distributes or connects pressure in the hydraulic system, joining various hoses. With Shuttle Valve its inside, Block Terminal can also relay pressure to particular ports.



Internal Valve	Material	A(max)	B(max)	C(max)
Consist of SHUTTLE VALVE	Aluminum	Extra order needed	Extra order needed	Extra order needed

DIVERTER VALVE

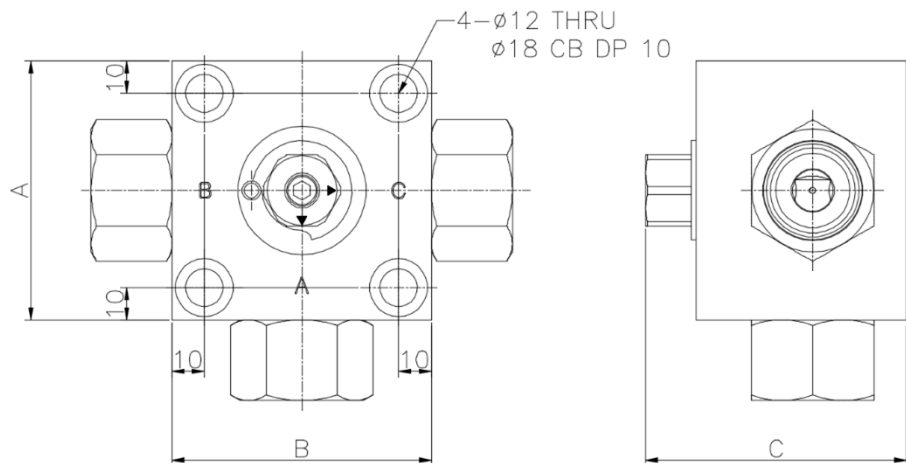
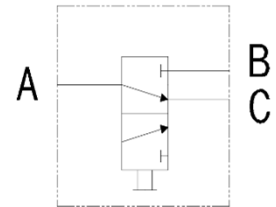
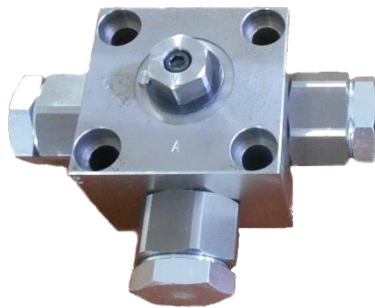
With spool type, Diverter Valve helps to switch the oil flow from P to A or B manually.



MODEL	Pressure(kgf/cm ²)	Oil Amount (LPM)	A(max)	B(max)	C(max)	PORT
DJDV-ORC-L/R	MAX280	MAX180	78	64.7	62.3	ALL PF1/2

3WAY VALVE

With Ball type, 3Way Valve helps to switch the oil flow from P to A or B manually. In addition, one of its strengths is that oil never leaks.



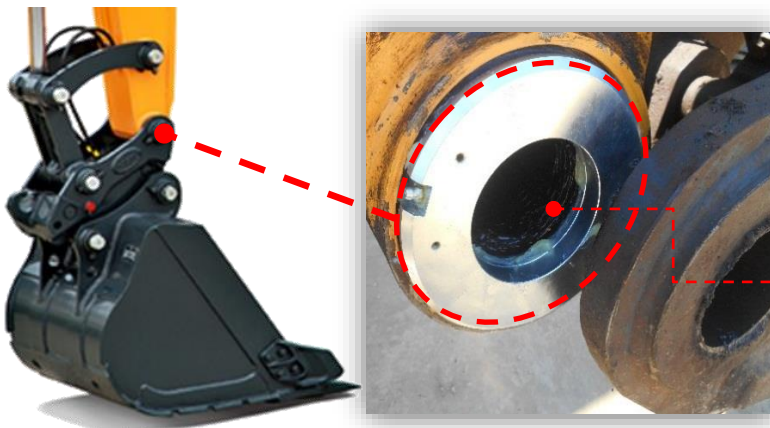
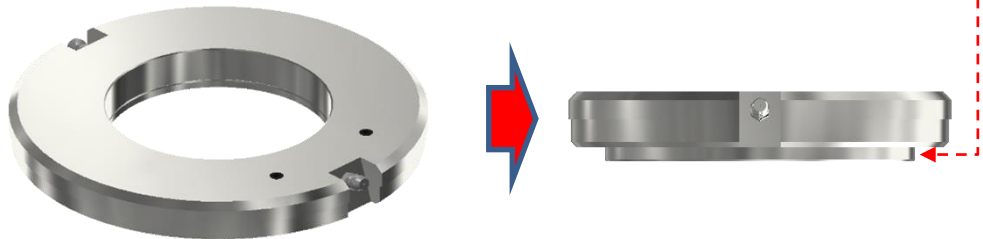
MODEL	Pressure(kgf/cm ²)	Oil Amount (LPM)	A(max)	B(max)	C(max)	PORT
DJB3WV-O-L/R	MAX400	MAX200	80	80	80.5	ALL PF3/4
DJB3WV26-O-L/R	MAX400	MAX470	94	94	94.5	ALL PF1

Variable Disc

Variable Disc is the best product to remove the gap between excavators' baskets and arms. Like a cylinder, the disk bloats with grease injected to fit its gap. The disk is easy to install and semi-permanent.

Variable Disc increases productivities and decreases costs.

Micro-minimized Cylinder (every 5mm adjusted)

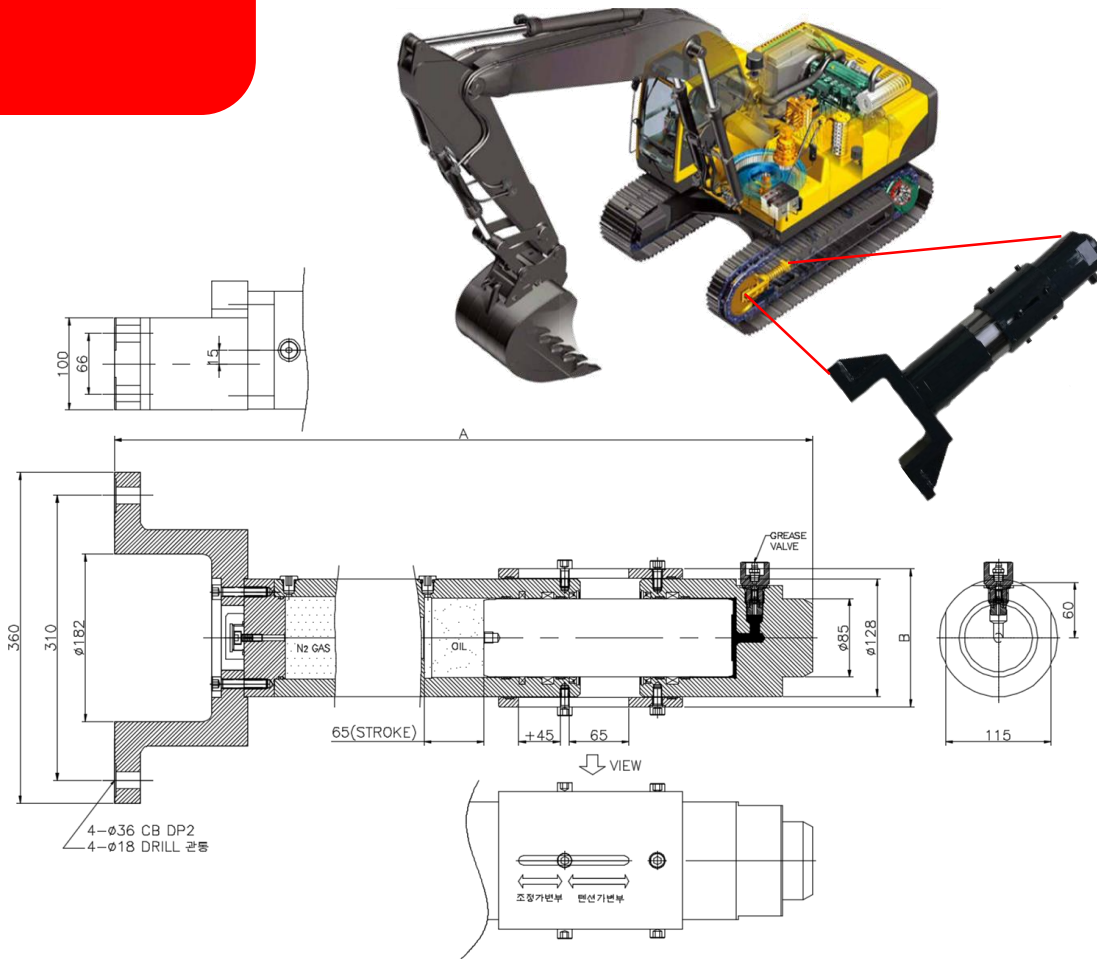


■ Applied Excavator Type

Model	9Series Model or After 9Series		
	Tons	30 tons	52 tons
Joint Pin size	Ø80	Ø90	Ø120
Product Number	66Q6-20010	66Q6-20020	66Q6-20060

GAS TENSION CYLINDER

As a damage buffer device for idlers, Gas Tension Cylinder absorbs damages which idlers get and increases safety and a duration. The cylinder is not based on a spring method but on gas accumulator method which increases a satisfaction of drivers.



MODEL	Permitted weight(kg)	hight(mm)	A(max)	B(max)
DJGTC-100B-A	MAX40,000	MAX45	760	150

DAE JIN HS Co., Ltd.



50561, 59, Seokgyesandan 4-gil, Sangbuk-myeon, Yangsan-si, Gyeongsangnam-do Republic of Korea

T 055-339-5807

F 055-339-5804

W www.djhs.co.kr