

Company Introduction

In fresh and green ground of Cheongwon, Chungbuk, Byeok Gang Industry Machine Co., Ltd. promises to lead with management satisfying customers in order to create our future living environment through the production of canning-related competitive products in welding, coating, and manufacturing based on professional manpower established with high performance and mutual trust and 20 years accumulated hydraulic techniques, industrial machines, and manufacturing techniques.

Younggil Kim, CEO
Byeok Gang Industry Machine Co., Ltd.

Certificates

Patent and Design Registration



Certificates

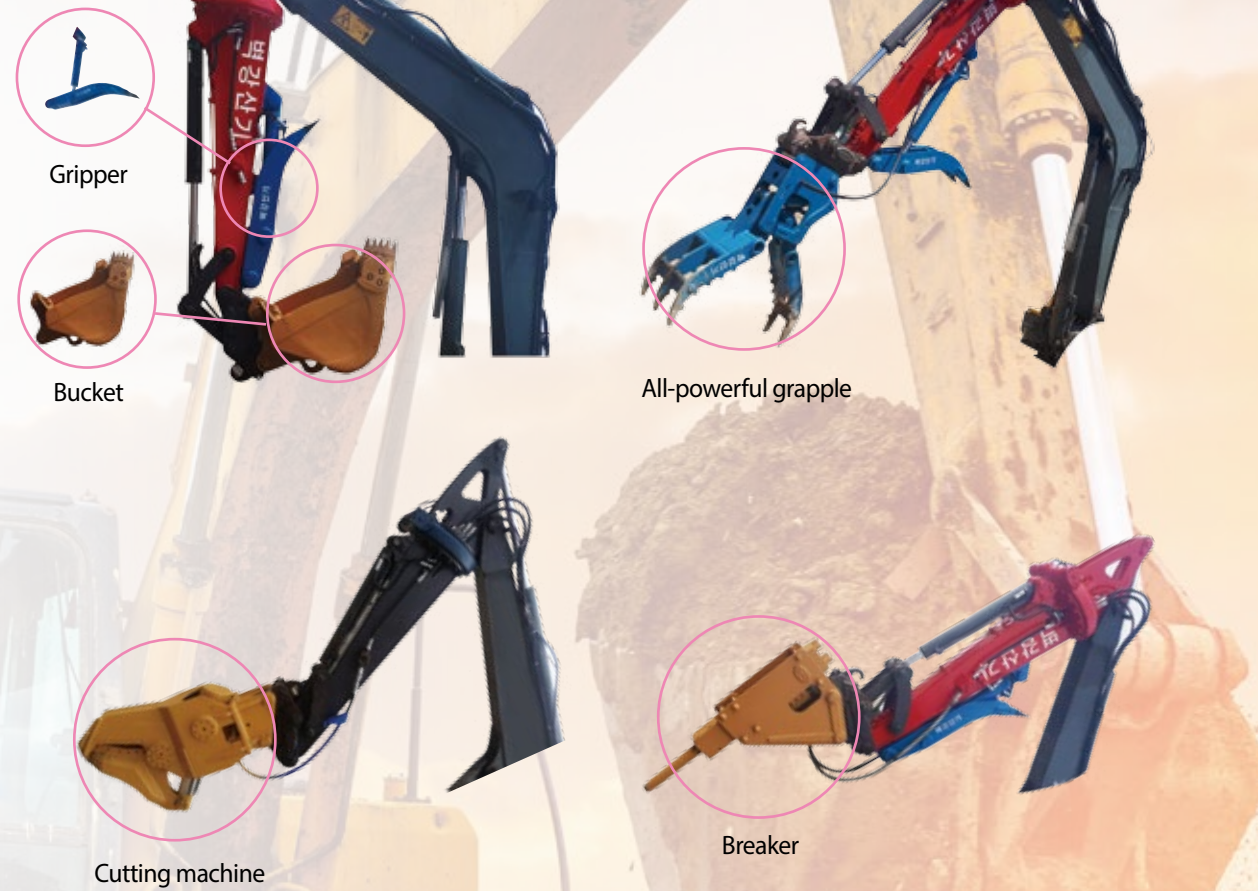


* Possessing multiple worldwide patents including China, Japan, India and Europe

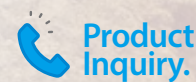
360°

New Concept Rotation Arm

An unprecedented gigantic thing has appeared



Our 360° rotating arm can be combined with various attachments (bucket, king grapple, cutting machine, etc.)



+82-10-7381-2031



Byeok Gang Industry Machine Co., Ltd.

204, Uiam-ro, Bugi-myeon, Cheongwon-gu, Cheongju-si, Chungcheongbuk-do, Korea

Tel. +82-43-217-2031 Fax. +82-43-217-2032

E-mail. sweety_na@naver.com



Please scan QR code for work video



Please scan QR code for work video

An unprecedented gigantic thing has appeared

New Concept Rotation Arm 360°

Byeok Gang Industry Machine



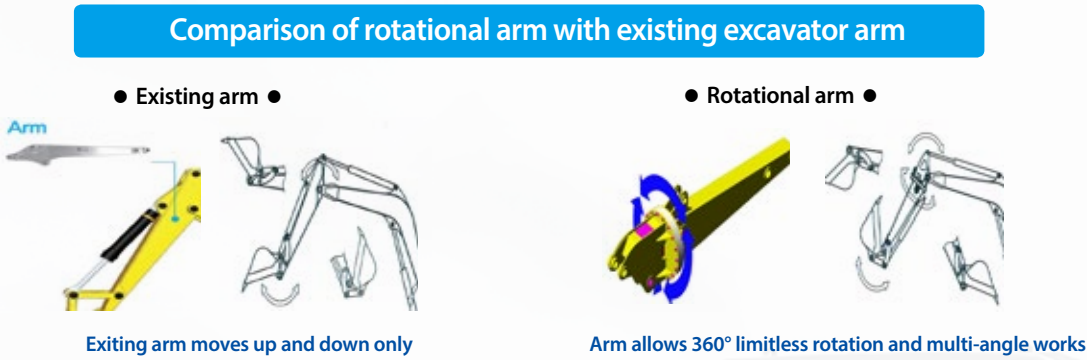
Rotation arm ▼

Byeok Gang Industry Machine Co., Ltd. ▼

Overview of Holding Technologies

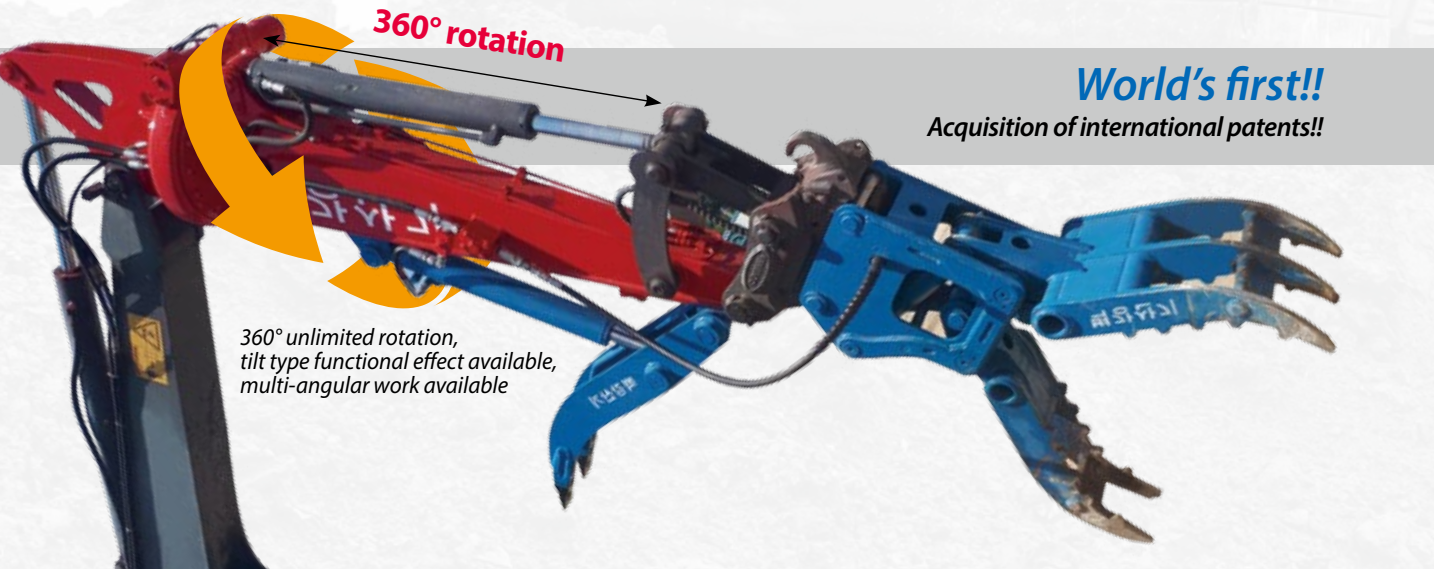
Excavator arm that allows multi-angle works

- (1) Excavator arm can rotate 360° limitlessly, and allows the operators to work in any direction they want.
- (2) Economic feasibility and weight reduction as we remove rotational devices that were attached to every attachment by using the existing attachment without rotational body.
- (3) Secure reliability in the 'rotational device' by dividing the existing single structure arm into two portions and combining the 360°rotational device to disperse the centre of gravity.



Tilt rotator function available through 360° unlimited rotation

Existing excavator allows up-down action only on a two-dimensional plane due to structural reasons. However, this product, equipped with a rotational device in the middle of the excavator arm, has an arm that can perform 360°-degree rotation work. As the equipped deice rotates, multi-angle processing is possible; work efficiency is increased and work range is increased. Effects of labor cost saving and fuel saving is expected because unnecessary equipment transfer, rotation, or movement can be removed, and separate manpower is not required to make the ground even.



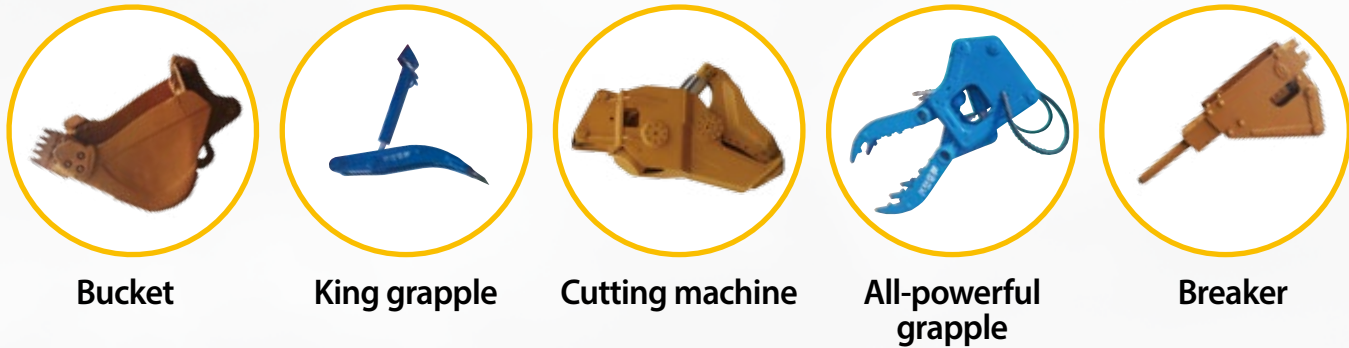
Excavator arm

Attached to * 360° rotational arm
▶ Bucket and gripper



New technology of Byeok Gang Industry

Tilting (angular) work available using the Arm cylinder by 100% even without the tilt rotator equipment



Production Facilities

Welding Jig / Welder for Large Structures



Processing Machines Including Boring Machine



Short and Coating Factory

